

COB Cannon LP200X

Light Efficiency:

20 Lumen/Watt

Light Quality:

CRI: 90.5

Color Temperature:

6125 K

Output: 1144 lm

Peak: 1255 cd

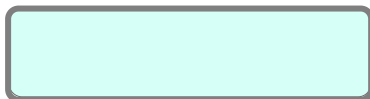
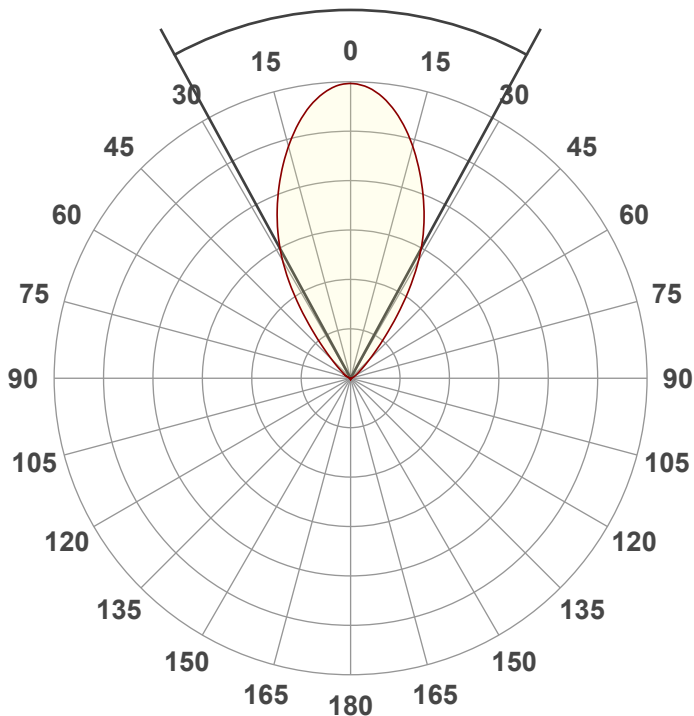
Power: 56.0 W

PF: 0.97



Beam Angle

57.1°



CIE 1931
x: 0.319
y: 0.343

Product Name:

COB Cannon LP200X

Test:

Full On

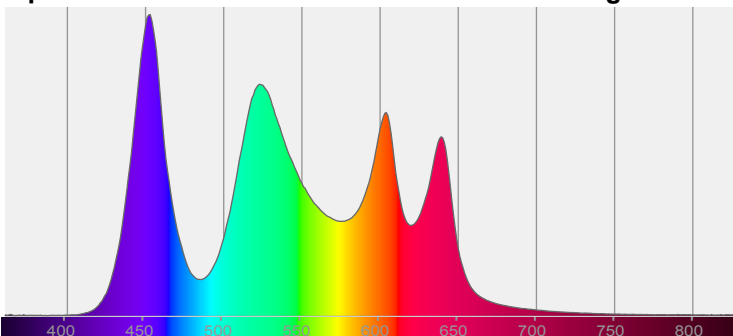
Date:

01/28/2025

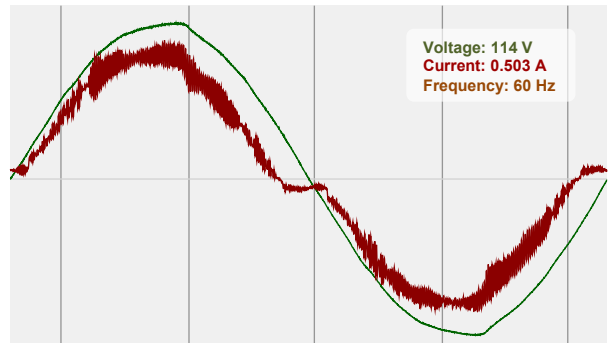
Note:

Spectra

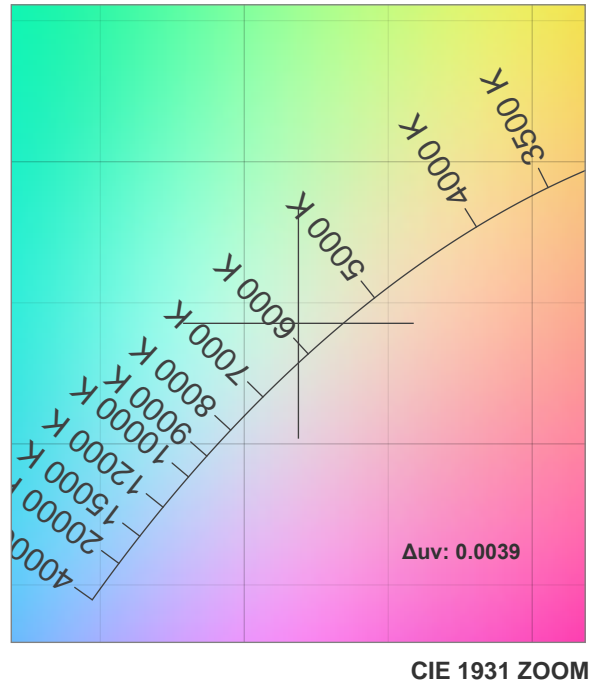
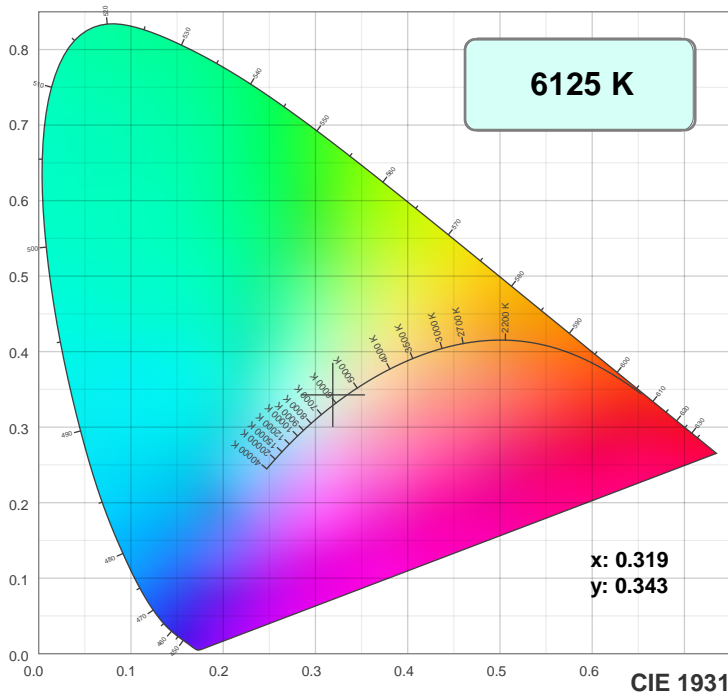
Dominant Wavelength: 567nm



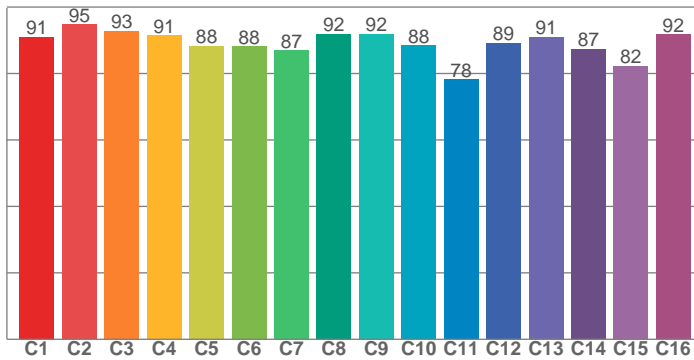
Power



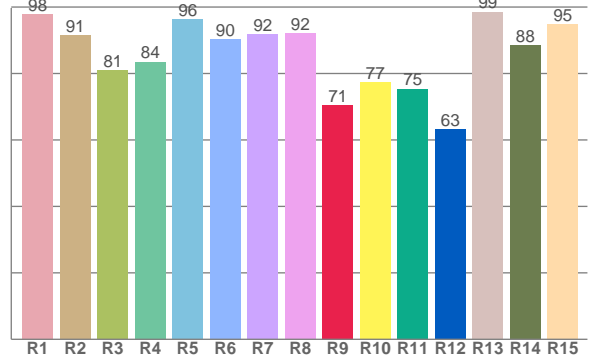
Color Details



TM30: 88.9



CRI: 90.5 (R1-R8)



CRI R values, only R1-R8 are used to calculate final CRI value

R1	R2	R3	R4	R5	R6	R7	R8	R9	R10	R11	R12	R13	R14	R15
97.9	91.4	80.9	83.5	96.3	90.4	91.8	92.0	70.5	77.4	75.4	63.2	98.6	88.4	94.8

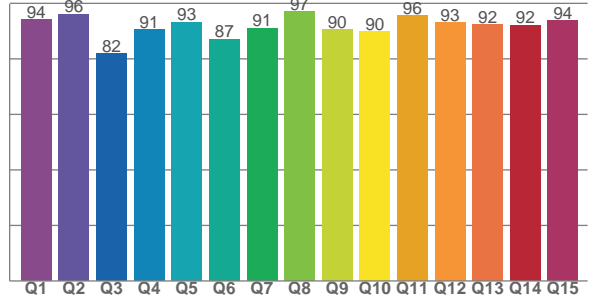
TM30 C values, 16 binned values out of total of 99 C values

C1	C2	C3	C4	C5	C6	C7	C8	C9	C10	C11	C12	C13	C14	C15	C16
91.0	94.7	92.9	91.5	88.3	88.1	86.9	91.9	92.0	88.5	78.2	89.2	91.1	87.3	82.3	91.7

CQS Q values

Q1	Q2	Q3	Q4	Q5	Q6	Q7	Q8	Q9	Q10	Q11	Q12	Q13	Q14	Q15
94.1	96.0	81.9	90.6	93.3	87.2	91.1	97.0	90.4	89.7	95.6	93.1	92.3	92.1	93.7

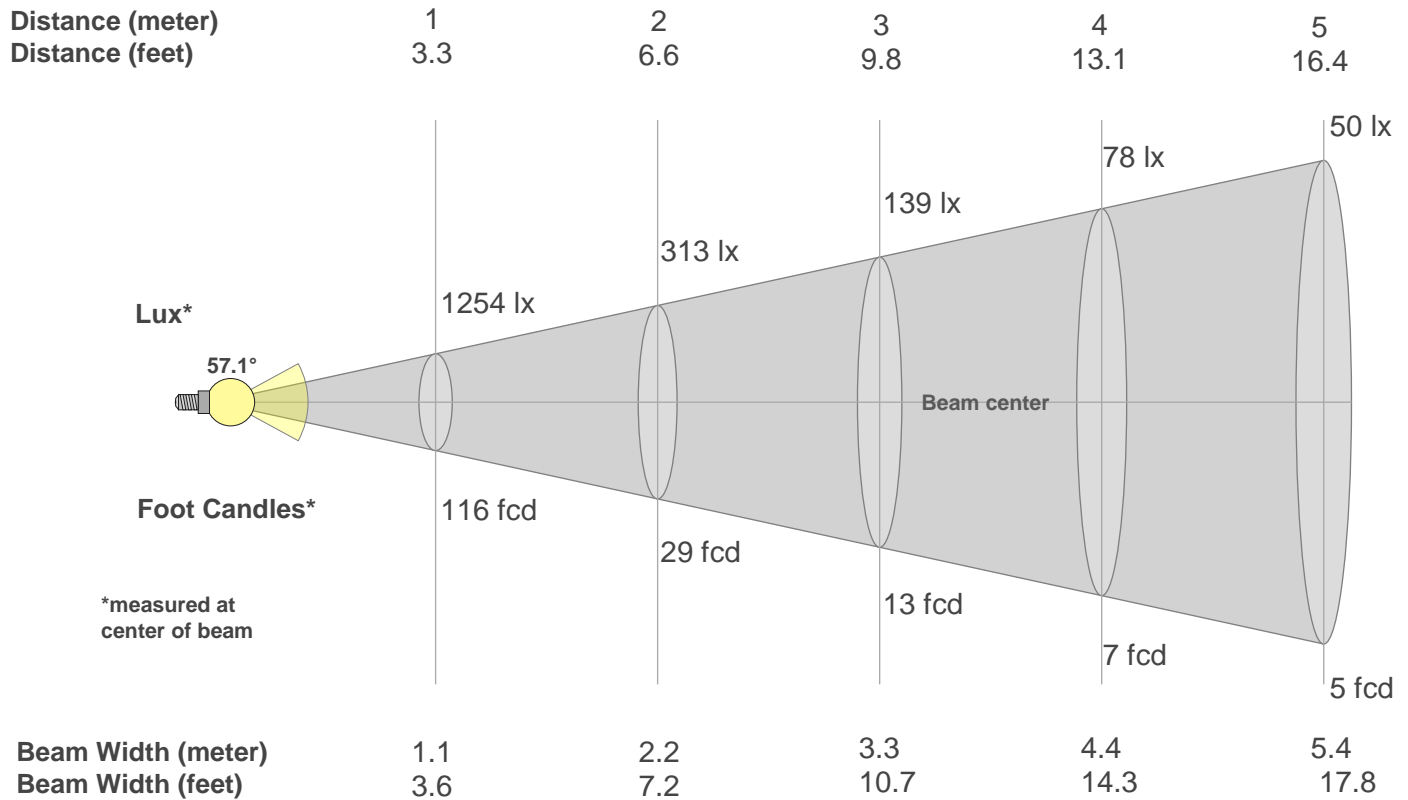
CQS: 91.1



Color Parameters

Color Temperature	Color Rendering Index	Red Component	Color Fidelity	Color Gamut	Color Quality Scale	Color Coordinate CIE 1931	Color Coordinate CIE 1931	Color Coordinate	Color Coordinate	Color Deviation from Black Body
CCT	CRI	CRI R9	TM30 Rf	TM30 Rg	CQS	x	y	u	v	Δuv
6125 K	90.5	70.5	88.9	104.7	91.1	0.319	0.343	0.197	0.318	0.0039

Beam Details



Beam Intensities from 1-20m

m	1	2	3	4	5	6	7	8	9	10	11	12	13	14	15	16	17	18	19	20
ft	3.3	6.6	9.8	13.1	16.4	19.7	23	26.2	29.5	32.8	36.1	39.4	42.7	45.9	49.2	52.5	55.8	59.1	62.3	65.6
lx	1254	313	139	78	50	35	26	20	15	13	10	9	7	6	6	5	4	4	3	3
fcd	116.5	29.1	12.9	7.3	4.7	3.2	2.4	1.8	1.4	1.2	1	0.8	0.7	0.6	0.5	0.5	0.4	0.4	0.3	0.3

Intensities in 0° C-plane

0°	2°	4°	6°	8°	10°	12°	14°	16°	18°	20°	22°	24°	26°	28°	30°	32°	34°	36°	38°
1254	1249	1233	1211	1180	1140	1097	1047	995	941	885	827	769	709	645	579	506	430	354	282
100%	100%	98%	97%	94%	91%	87%	84%	79%	75%	71%	66%	61%	57%	51%	46%	40%	34%	28%	23%

Intensities in 90° C-plane

0°	2°	4°	6°	8°	10°	12°	14°	16°	18°	20°	22°	24°	26°	28°	30°	32°	34°	36°	38°
1254	1249	1233	1211	1180	1140	1097	1047	995	941	885	827	769	709	645	579	506	430	354	282
100%	100%	98%	97%	94%	91%	87%	84%	79%	75%	71%	66%	61%	57%	51%	46%	40%	34%	28%	23%

Intensities in 180° C-plane

0°	2°	4°	6°	8°	10°	12°	14°	16°	18°	20°	22°	24°	26°	28°	30°	32°	34°	36°	38°
1254	1247	1234	1211	1178	1141	1097	1047	995	940	884	827	769	709	646	578	504	429	353	283
100%	99%	98%	97%	94%	91%	87%	84%	79%	75%	70%	66%	61%	57%	52%	46%	40%	34%	28%	23%

Intensities in 270° C-plane

0°	2°	4°	6°	8°	10°	12°	14°	16°	18°	20°	22°	24°	26°	28°	30°	32°	34°	36°	38°
1254	1247	1234	1211	1178	1141	1097	1047	995	940	884	827	769	709	646	578	504	429	353	283
100%	99%	98%	97%	94%	91%	87%	84%	79%	75%	70%	66%	61%	57%	52%	46%	40%	34%	28%	23%

Beam Angle 50%	Field Angle 10%	Cutoff Angle 2,5%	Intensity Ratio in 120° Cone	Intensity Ratio in 90° Cone
57.1°	88.8°	114.2°	96.8%	90.7%